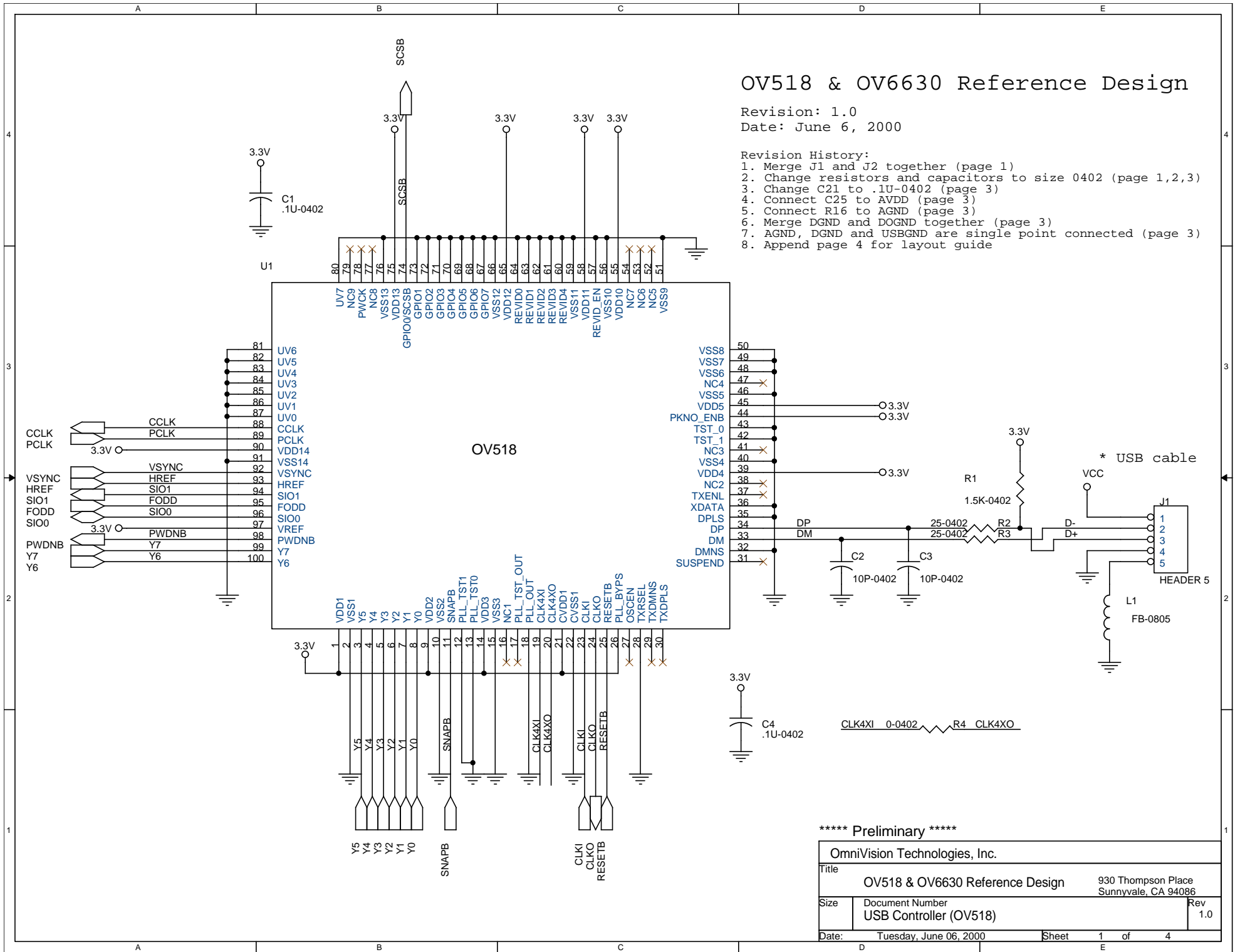


OV518 & OV6630 Reference Design

Revision: 1.0
Date: June 6, 2000

Revision History:

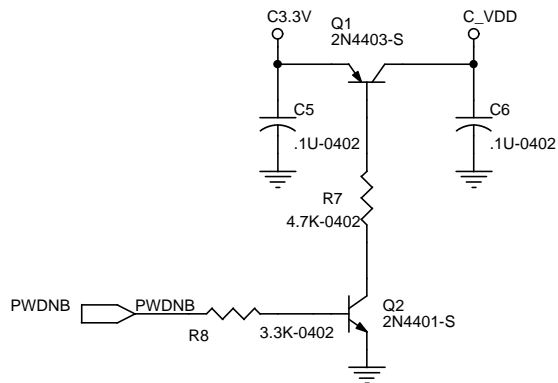
1. Merge J1 and J2 together (page 1)
2. Change resistors and capacitors to size 0402 (page 1,2,3)
3. Change C21 to .1U-0402 (page 3)
4. Connect C25 to AVDD (page 3)
5. Connect R16 to AGND (page 3)
6. Merge DGND and DOGND together (page 3)
7. AGND, DGND and USBGND are single point connected (page 3)
8. Append page 4 for layout guide



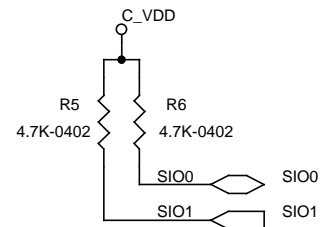
***** Preliminary *****

OmniVision Technologies, Inc.		
Title		930 Thompson Place
OV518 & OV6630 Reference Design		Sunnyvale, CA 94086
Size	Document Number	Rev
	USB Controller (OV518)	1.0
Date:	Tuesday, June 06, 2000	Sheet 1 of 4

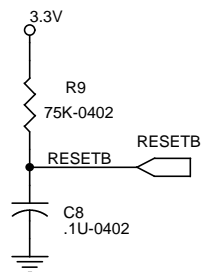
* Camera power switch



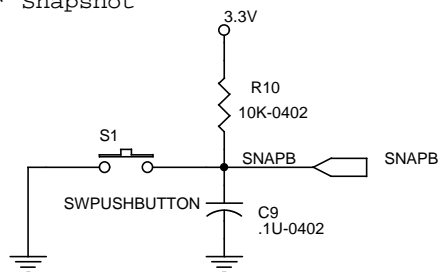
* Optional



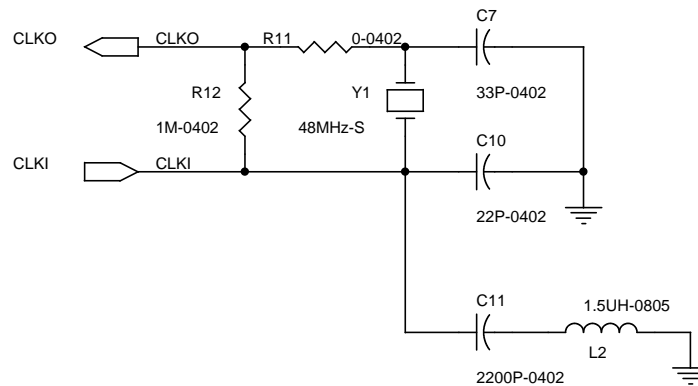
* Reset



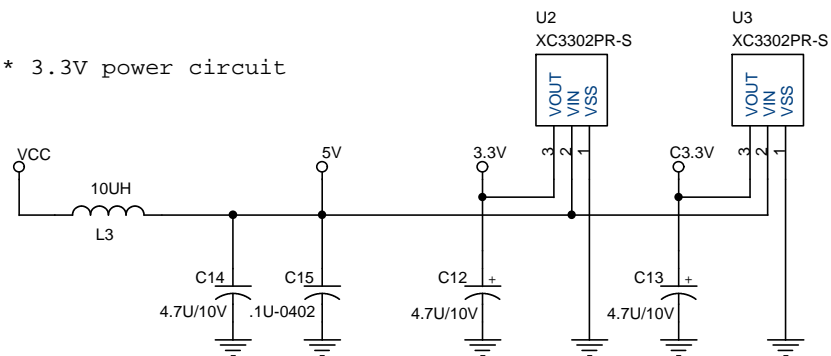
* Snapshot



* Crystal - 3rd Overtone (48MHz)

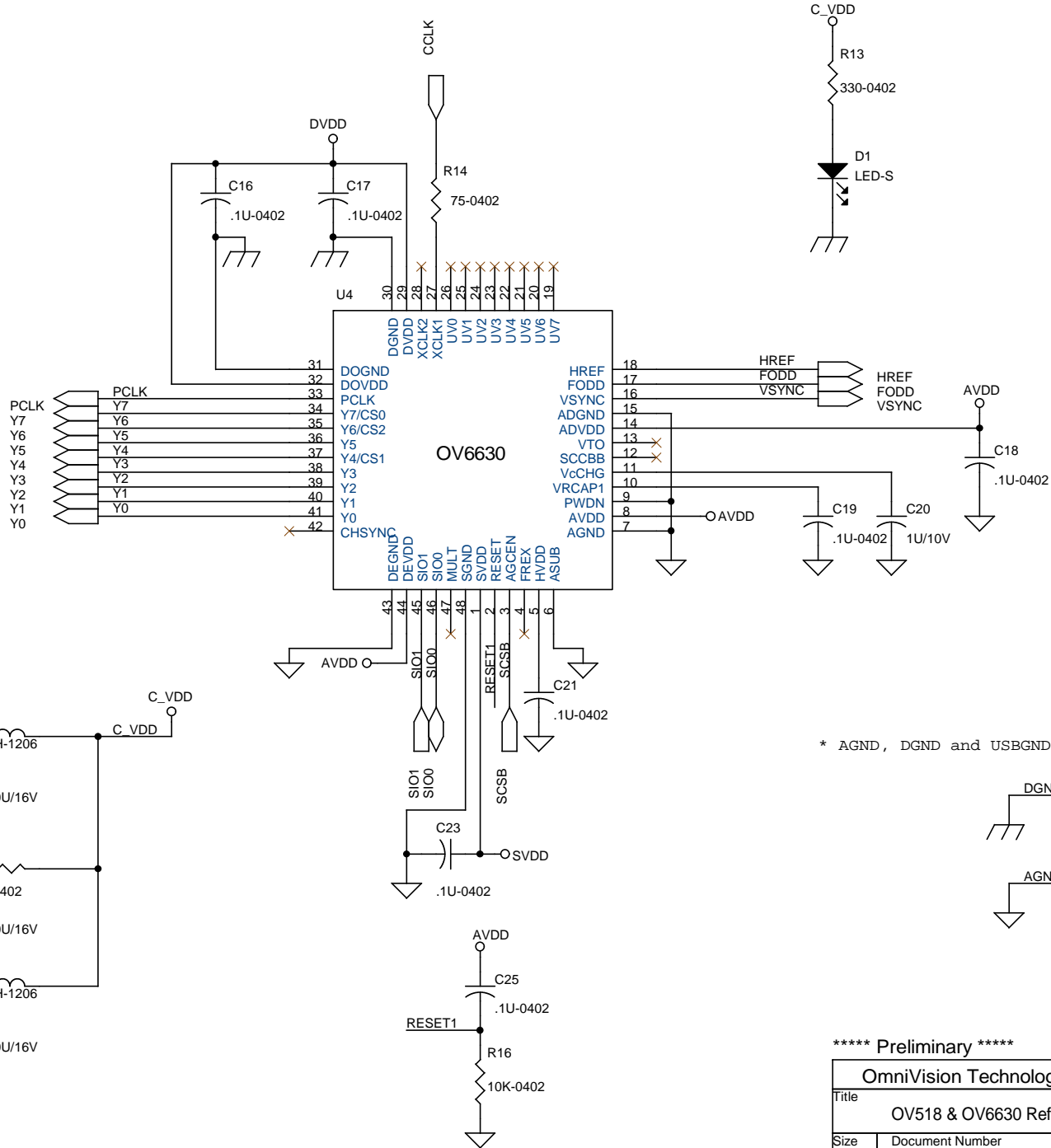


* 3.3V power circuit

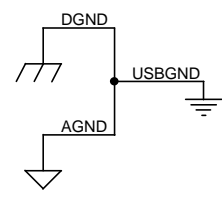


***** Preliminary *****

OmniVision Technologies, Inc.		
Title		930 Thompson Place
OV518 & OV6630 Reference Design		Sunnyvale, CA 94086
Size	Document Number	Rev
	Power and control	1.0
Date:	Tuesday, June 06, 2000	Sheet 2 of 4



* AGND, DGND and USBGND are single point connected

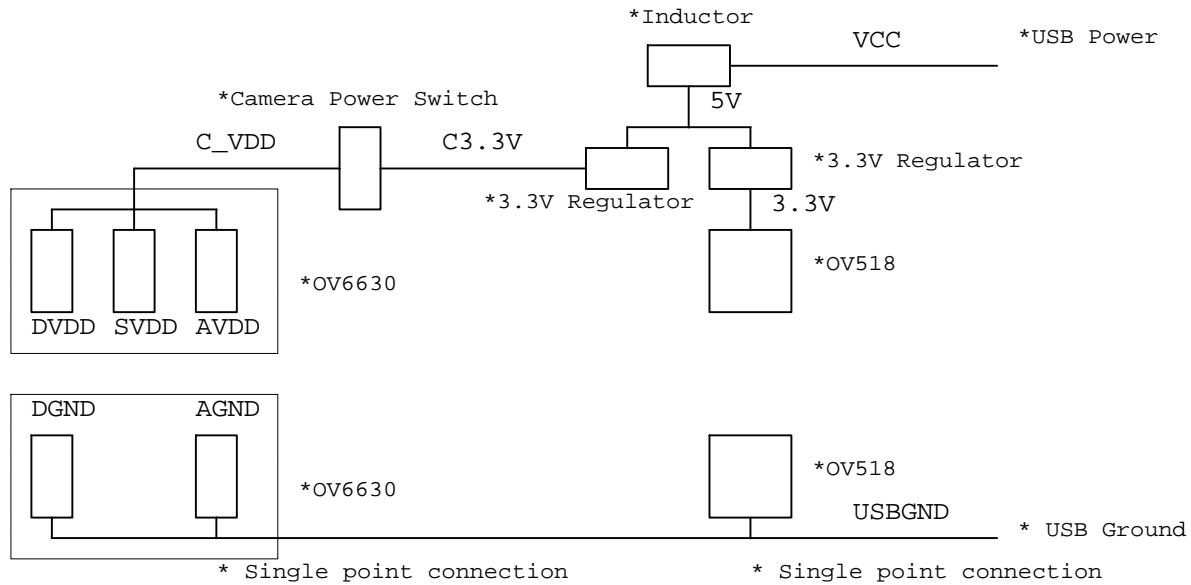


***** Preliminary *****

OmniVision Technologies, Inc.		
Title		930 Thompson Place
OV518 & OV6630 Reference Design		Sunnyvale, CA 94086
Size	Document Number	Rev
	Camera Module	1.0
Date:	Tuesday, June 06, 2000	Sheet 3 of 4

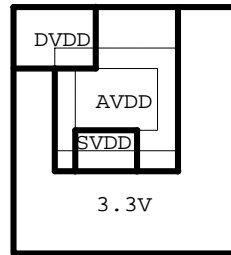
OV518 & OV6630 Layout Guide

Power Scheme :

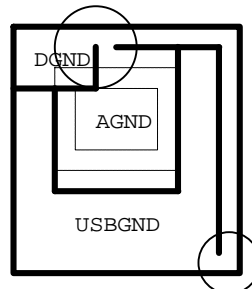


PCB Layout Notice :

1. Power Plane : Separate to 4 planes, DVDD, SVDD, AVDD, 3.3V



2. Ground Plane : Separate to 3 planes, DGND, AGND, USBGND with single point connections



***** Preliminary *****

OmniVision Technologies, Inc.		
Title		930 Thompson Place Sunnyvale, CA 94086
OV518 & OV6630 Reference Design		
Size	Document Number	Rev
	Layout Guide	1.0
Date:	Tuesday, June 06, 2000	Sheet 4 of 4